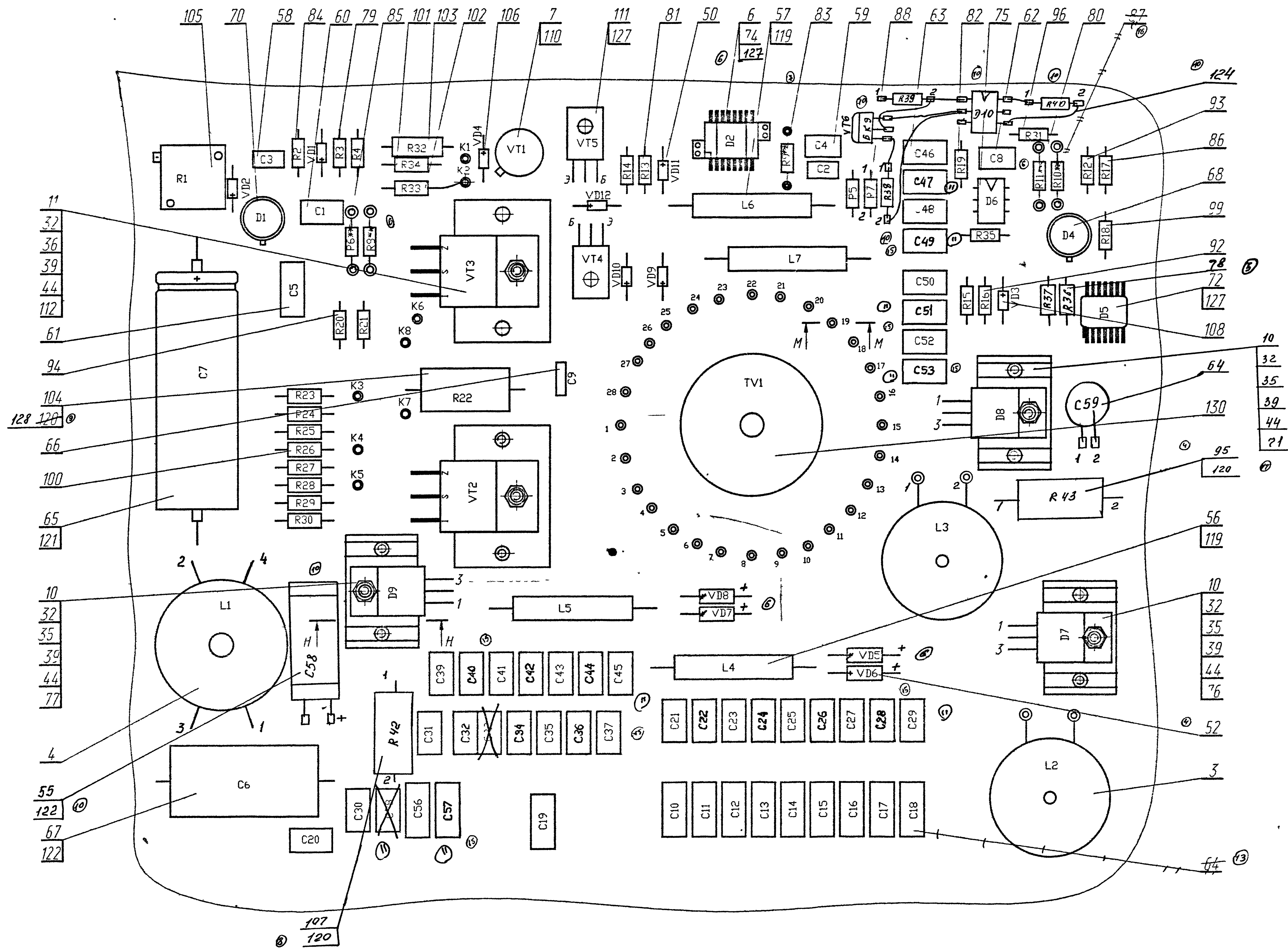
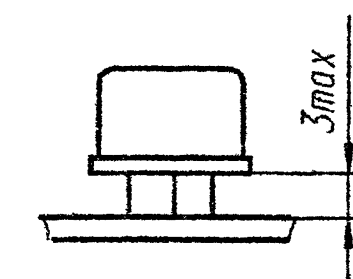


K(21) (1)

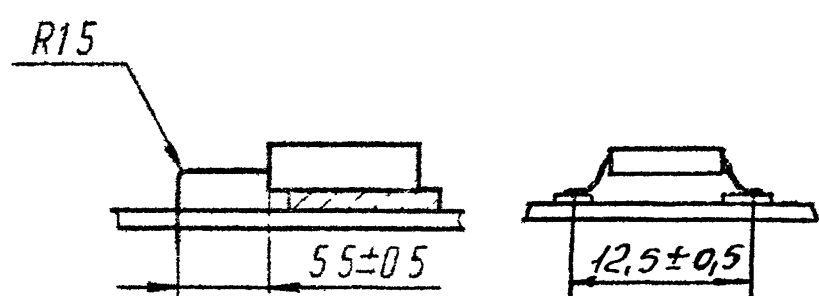


Формовка и установка элементов

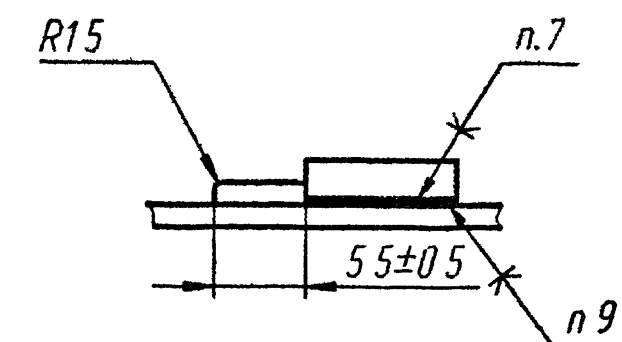
поз.68,70



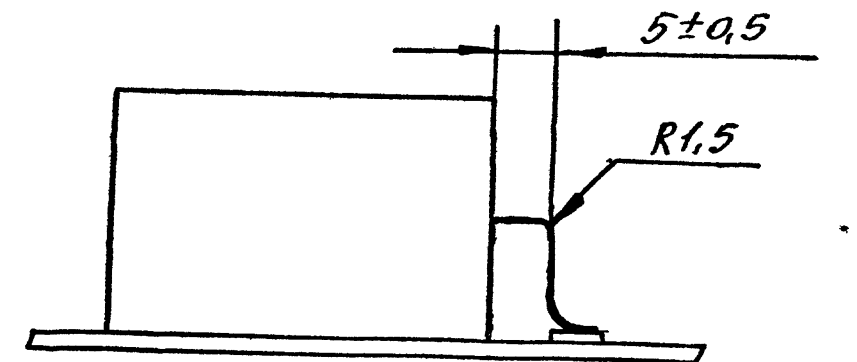
поз.76,112



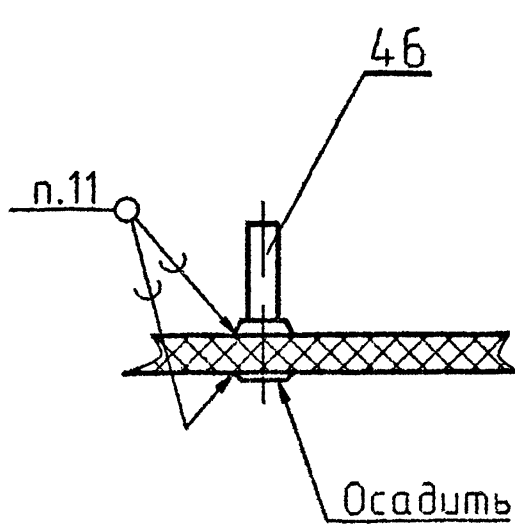
поз.111



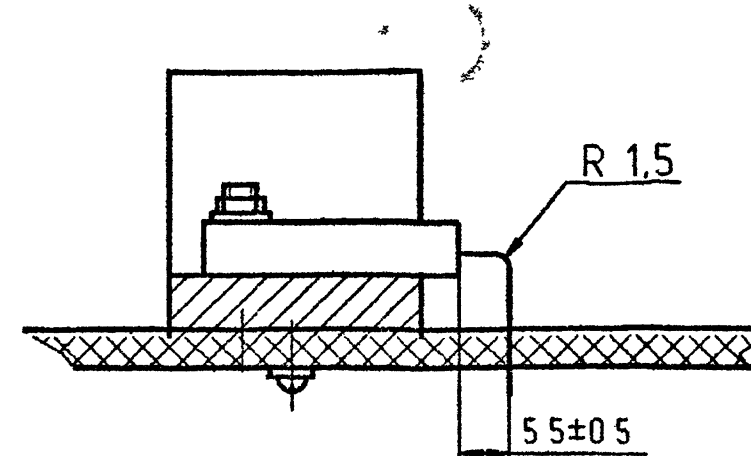
поз.55



M-M



H-H



14-802-15-389 3/8 12.25.98, 8-802-15-55 1/5 12.25.98
15-802-15-391 3/8 12.25.98, 7-802-15-115 1/4 12.25.98
15-802-15-240 1/4 12.25.98, 12-802-15-115 1/4 12.25.98
11-802-15-214 1/4 12.25.98, 6-802-15-115 1/4 12.25.98
10-802-15-154 1/4 12.25.98, 2-10.6.98
9-802-15-140 1/4 12.25.98, 3-10.6.98